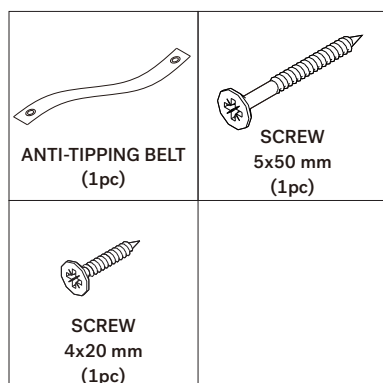


## POLISHED IMPERFECT FLOOR MIRROR

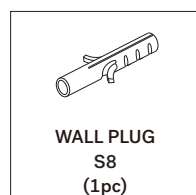
### ASSEMBLY INSTRUCTIONS FOR FLOOR MIRROR INSTALLATION



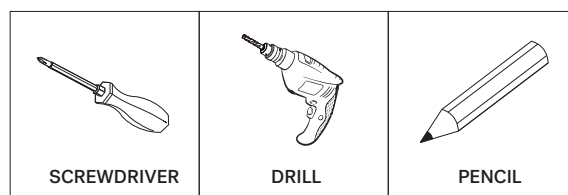
#### HARDWARE ENCLOSED



#### HARDWARE REQUIRED (Not included in package)



#### TOOLS REQUIRED (Not included in package)



AS WALL MATERIALS VARY, WALL PLUG FOR FIXING TO WALL ARE NOT INCLUDED.



FOR ADVICE ON SUITABLE SCREW SYSTEMS, CONTACT YOUR LOCAL SPECIALISED DEALER. SEEK THE PROFESSIONAL ADVICE IF YOU ARE NOT FAMILIAR WITH THIS TYPE OF INSTALLATION OR HAVE ANY SAFETY DOUBTS UNDERTAKING THE TASK.



#### WARNING

Serious or fatal crushing injuries can occur from this product tip-over.

**Children have died from furniture tipover.**

**To help prevent tip-over:**  
Always install the anti-tipping system provided with this product.

Place heaviest items in the lowest drawers or shelves.

Do not hang or place objects on top of this product if its height is higher than 150cm

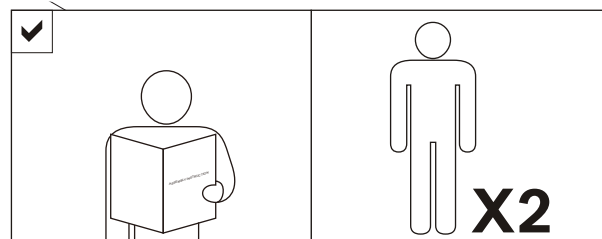
Never allow children to stand, climb or hang on drawers, doors, or shelves.

Never open more than one drawer at a time.

Do not lean or push against this product.

**NOTE: Use of tip-over restraints may only reduce, but not eliminate, the risk of tip-over.**

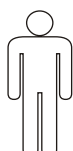
#### NOTICE



#### SYMBOLS



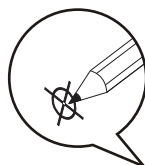
DIRECTION



NUMBER OF PERSONS NEEDED



USE HAND



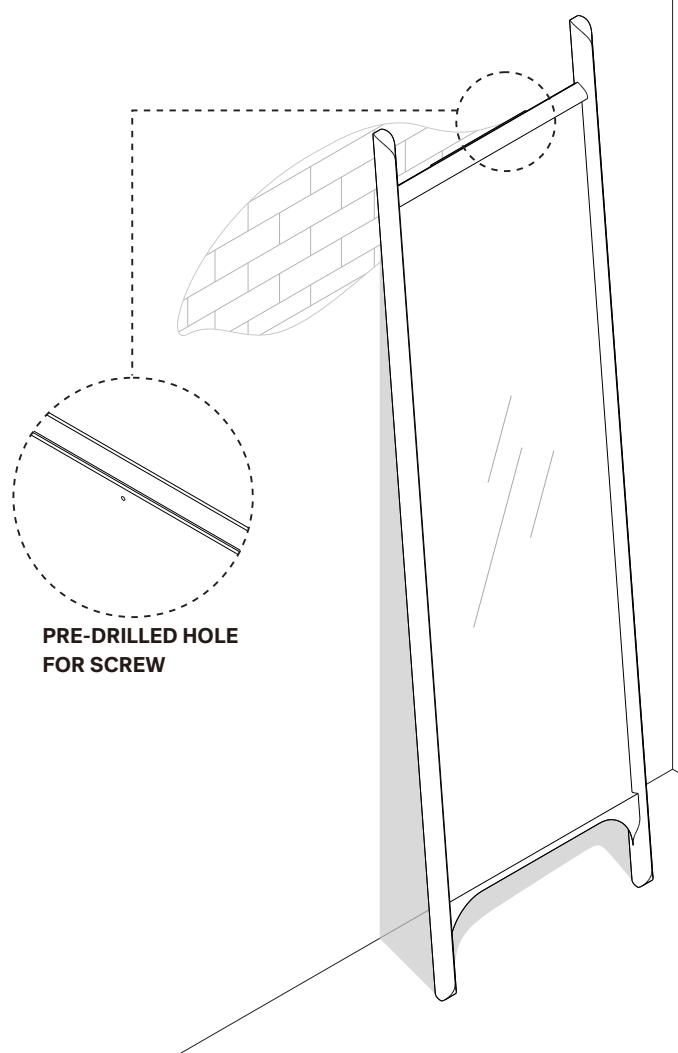
USE PENCIL



USE DRILL



USE SCREWDRIVER TO TIGHTEN



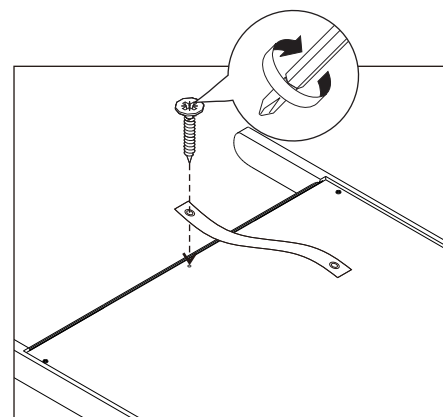
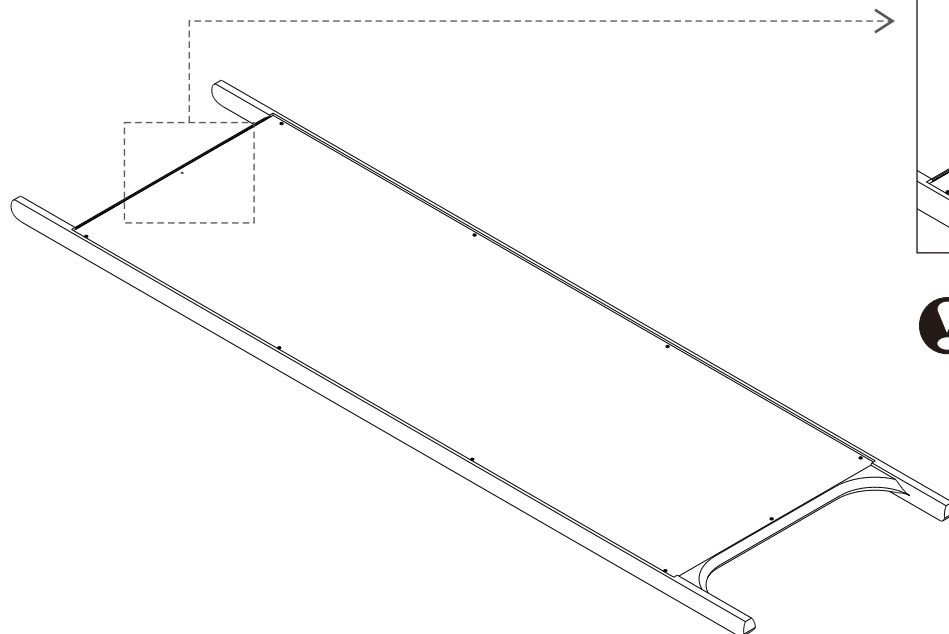
PRE-DRILLED HOLE FOR SCREW

## POLISHED IMPERFECT FLOOR MIRROR

### ASSEMBLY INSTRUCTIONS FOR FLOOR MIRROR INSTALLATION

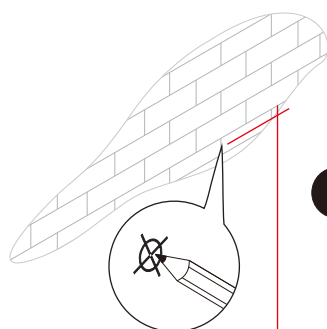


#### 1 INSTALLING ANTI-TIPPING BELT ON THE FRAME



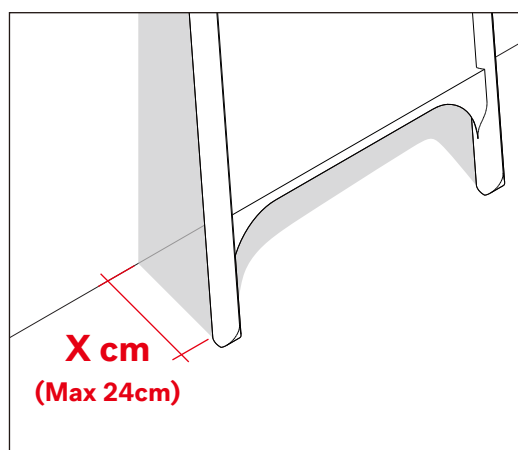
- USE ANTI-TIPPING BELT (1X)
- USE SCREW 4x20 mm (1X)
- TIGHTEN FULLY

#### 2 DETERMINE THE SCREW HOLE TO THE WALL

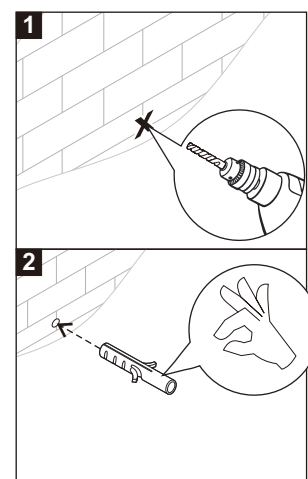


! THE ANTI-TIPPING HEIGHT SHOULD NOT EXCEED THE MIRROR

**Y cm**  
(Desired height)



**X cm**  
(Max 24cm)



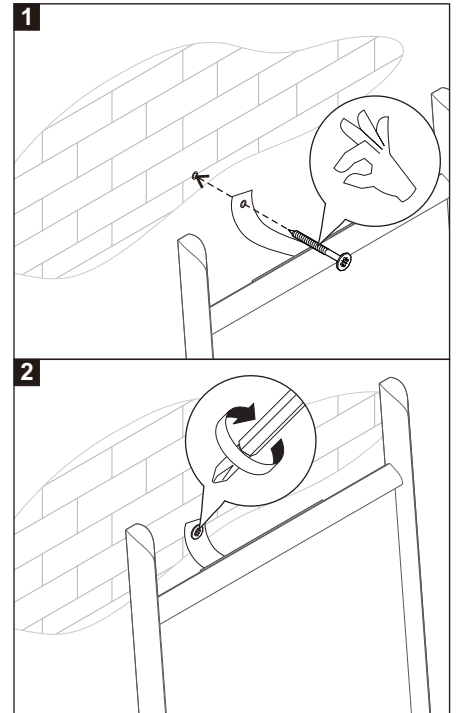
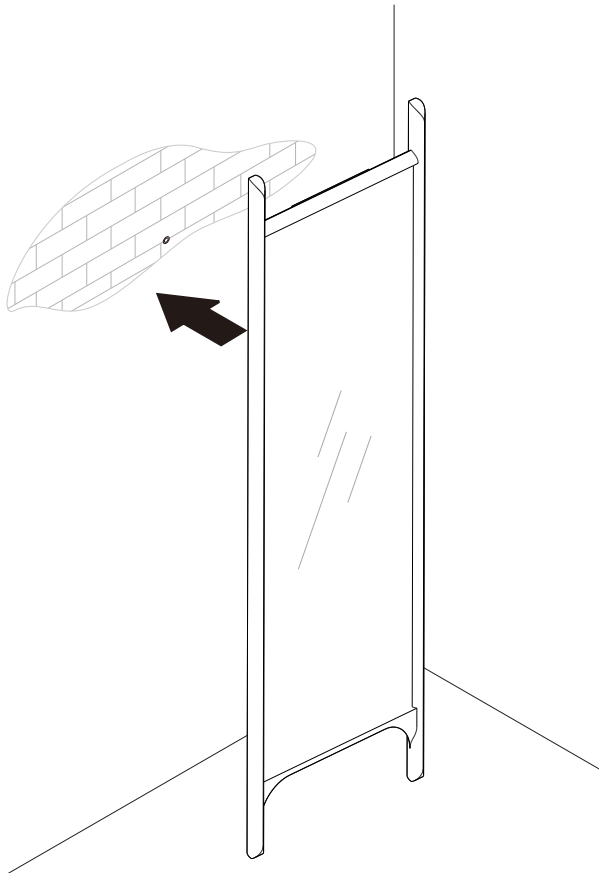
! USE WALL PLUG S8 (1X)

## POLISHED IMPERFECT FLOOR MIRROR

### ASSEMBLY INSTRUCTIONS FOR FLOOR MIRROR INSTALLATION



#### 3 INSTALLING ANTI-TIPPING BELT TO THE WALL



- ! - USE SCREW 5x50 mm (1X)
- TIGHTEN FULLY

#### 4 FINISH

