

## 11251 TRESTLE OUTDOOR DINING TABLE

### ASSEMBLY INSTRUCTIONS FOR DINING TABLE INSTALLATION

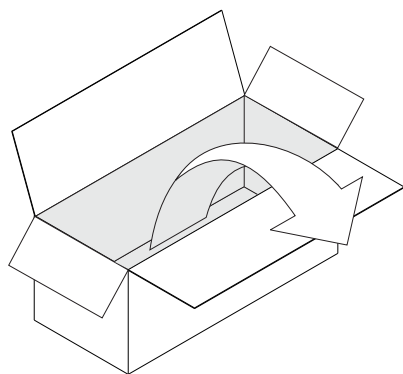


#### HARDWARE ENCLOSED

|                               |                               |                           |                               |
|-------------------------------|-------------------------------|---------------------------|-------------------------------|
|                               |                               |                           |                               |
| JCBC SCREW<br>M6x50<br>(6pcs) | JCBC SCREW<br>M6x20<br>(2pcs) | WASHER<br>M6x18<br>(2pcs) | SPRING WASHER<br>M6<br>(2pcs) |
|                               |                               |                           |                               |
| LONG NUT<br>M6x20mm<br>(4pcs) | CURVED WASHER<br>M6<br>(4pcs) |                           |                               |

#### TOOLS ENCLOSED

|           |        |
|-----------|--------|
|           |        |
| ALLEN KEY | WRENCH |

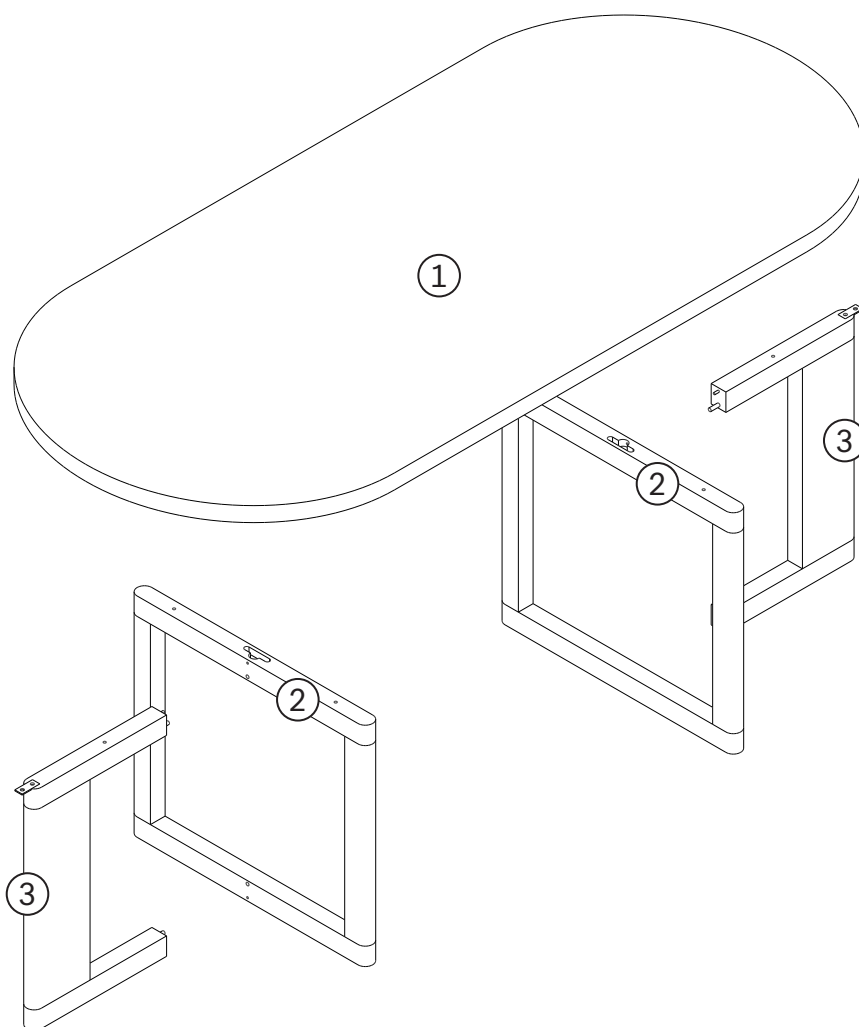


#### IN YOUR PACKAGE :

ASSEMBLY INSTRUCTIONS  
HARDWARE (AS LISTED ABOVE)

#### PARTS TO BE INSTALLED

1. TABLE TOP (1 pc)
2. MIDDLE LEGS (2 pcs)
3. SIDE LEGS (2 pcs)

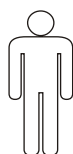


- LEGS ARE INTERCHANGEABLE  
- X2 LEG MOUNTING OPTIONS, WIDE OR NARROW,  
SEE STEP B

#### SYMBOLS



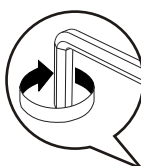
DIRECTION



NUMBER OF  
PERSONS NEEDED



USE HAND

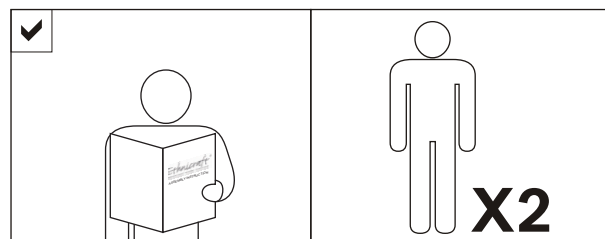


USE ALLEN KEY  
TO TIGHTEN



USE WRENCH  
TO TIGHTEN

#### NOTICE



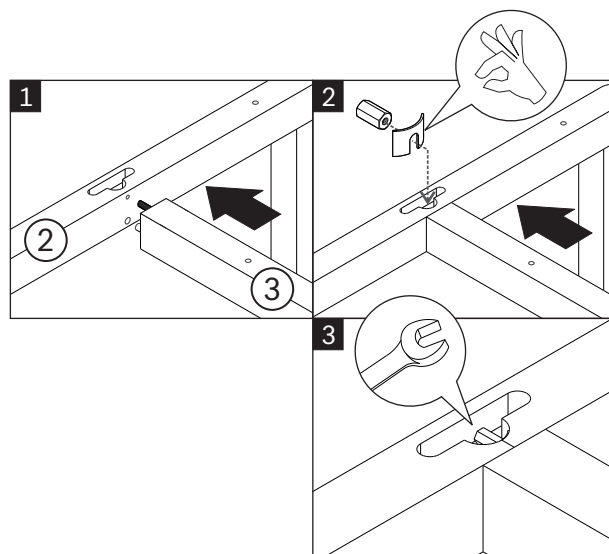
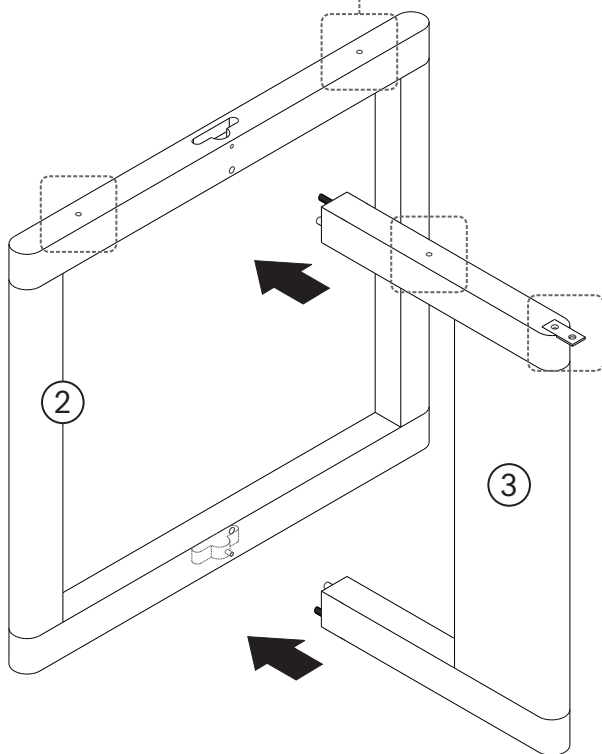
## 11251 TRESTLE OUTDOOR DINING TABLE

### ASSEMBLY INSTRUCTIONS FOR DINING TABLE INSTALLATION



#### A FIXING SIDE AND MIDDLE LEG COMPONENTS TOGETHER

MAKE SURE THE HOLES ON EACH PART ARE FACING UP

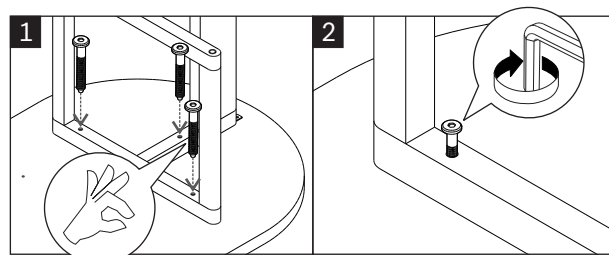
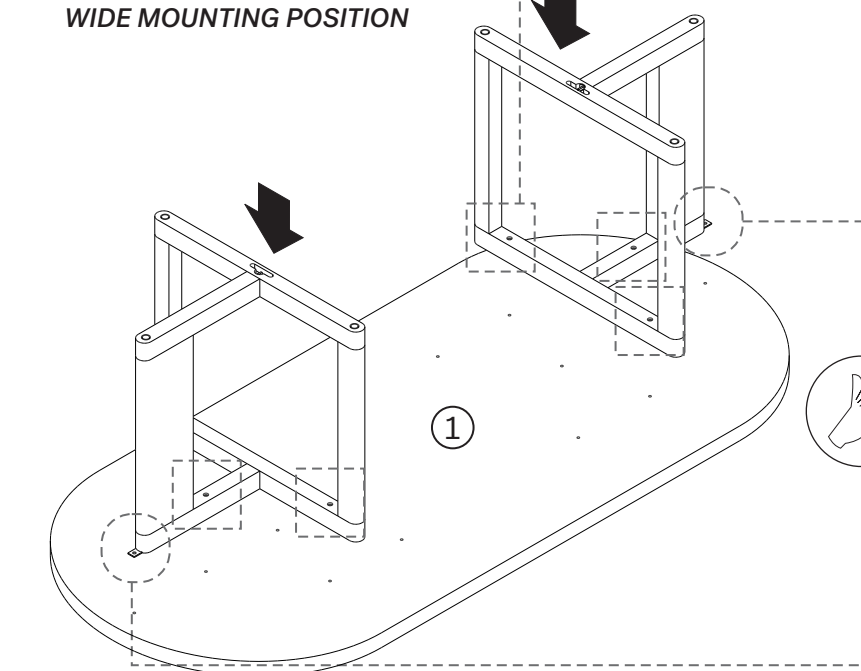


- USE LONG NUT M6x20mm (X4)
- USE CURVED WASHER (X4)
- TIGHTEN FULLY
- COMPLETE ABOVE STEPS ON BOTH LEGS

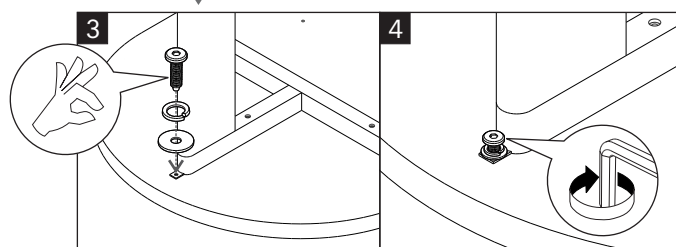
#### B ATTACHING LEGS TO TABLE TOP



WIDE MOUNTING POSITION



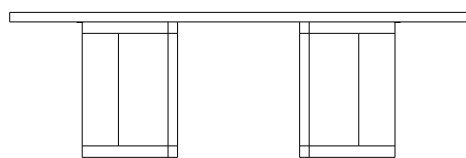
- USE JCBC SCREW M6x50mm (X6)
- TIGHTEN FULLY



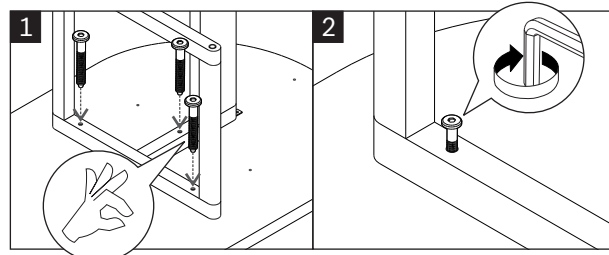
- USE JCBC SCREW M6x20mm (X2)
- USE WASHER M6x18 (X2)
- USE SPRING WASHER M6 (X2)
- TIGHTEN FULLY

## 11251 TRESTLE OUTDOOR DINING TABLE

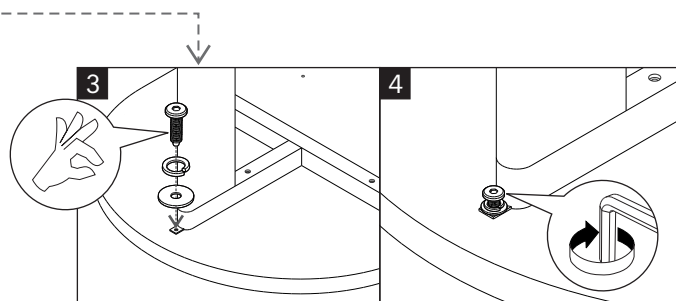
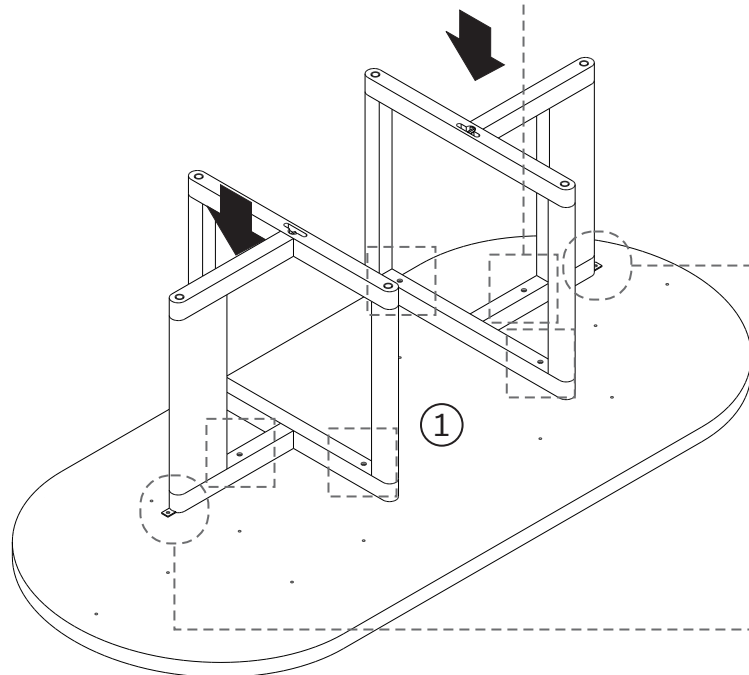
### ASSEMBLY INSTRUCTIONS FOR DINING TABLE INSTALLATION



NARROW MOUNTING POSITION

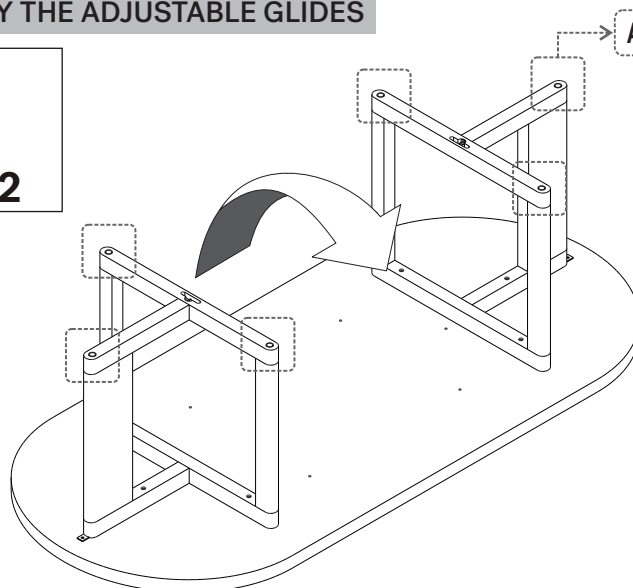
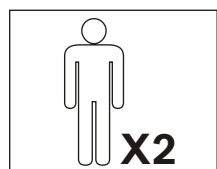


- ! - USE JCBC SCREW M6x50mm (X6)
- TIGHTEN FULLY

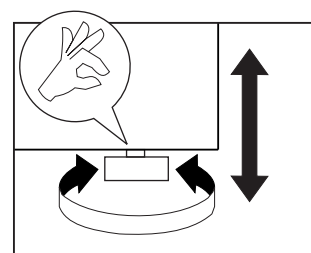
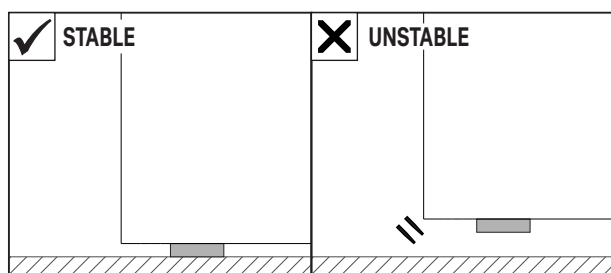
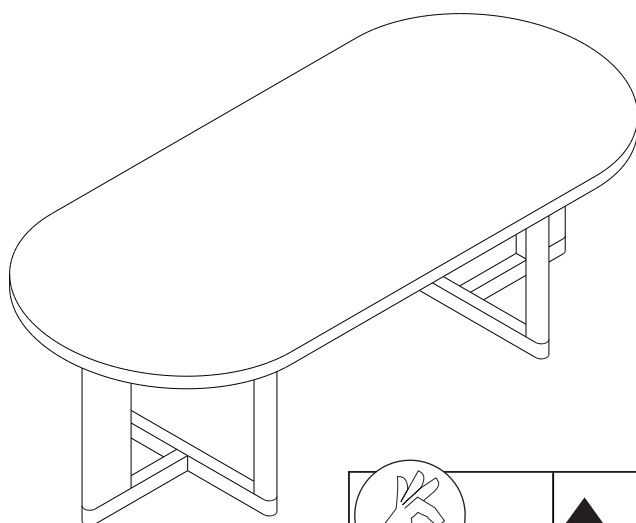


- ! - USE JCBC SCREW M6x20mm (X2)
- USE WASHER M6x18 (X2)
- USE SPRING WASHER M6 (X2)
- TIGHTEN FULLY

### C MODIFY THE ADJUSTABLE GLIDES



ADJUSTABLE GLIDES



**NOTE :**  
TO ENSURE STABILITY, ALL GLIDES SHOULD BE ADJUSTED  
TO MAKE EVEN CONTACT WITH THE SURFACE UNDERFOOT.