



EMECO STOOL

By Philippe Starck, 2001

Originally designed by Philippe Starck for a MoMA exhibition, the shape - a circle in a square - is at once practical and sophisticated. Built by hand from 80% recycled aluminum, it is lightweight, non-corrosive, fire resistant and super strong. Lifetime warranty. Seat pads available. Additional powder coat colors also offered.

Features:



Outdoor approved (hand brushed aluminum)



Made from 80% recycled aluminum



Carbon footprint declared



Made in USA



Lifetime Warranty

Material: 80% recycled aluminum.

Standard glides: TPU plastic is a softer plastic, for allround use, including outdoor.

Optional glides:

Hard floor glides: with felt inserts, for indoor use only.
Carpet glides: hard polycarbonate plastic, designed to reduce friction. Also approved for outdoor use.

Colors:



Hand brushed aluminum



Hand polished aluminum

OPTIONAL - EMECO's INHOUSE POWDER COAT COLORS:



Dark Grey
NCS S 7002-B



Coral Orange
NCS S 2570-Y70R



White Grey
NCS S 1502-Y



Light Blue
NCS S 5010-B70G



Sweater Brown
NCS S 5010-Y30R



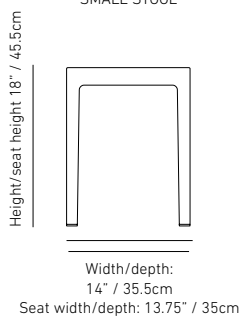
Green
NCS S 7020-G10Y



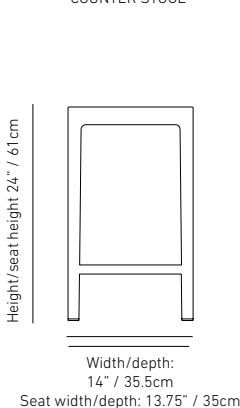
Black

Dimensions:

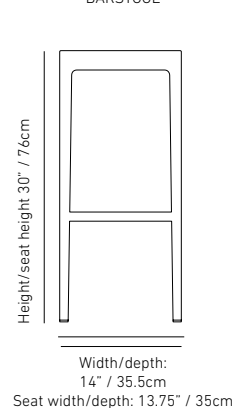
SMALL STOOL



COUNTER STOOL



BARSTOOL



Weight:

Small stool 4.25lb / 2kg
Counter stool 6lb / 2.5kg
Barstool 6.5lb / 3kg



EMECO STOOL

By Philippe Starck, 2001

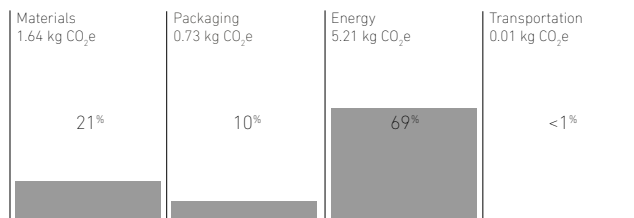
Warranty:

Indoor: Lifetime (150 years), excl. glides
Outdoor: Lifetime (150 years), excl. glides
(handbrushed & powder coated aluminum)

Certified:

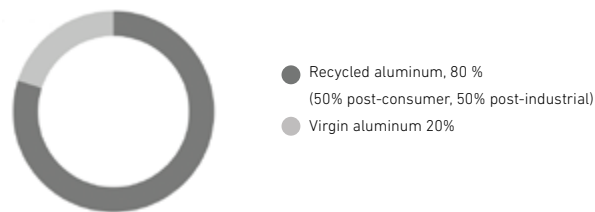
Strength & Stability: ANSI/BIFMA x5.1
Flammability: Aluminum is naturally fireproof
Indoor Air / VOC: ANSI/BIFMA e3-2019,
Sections 7.6.1, 7.6.2, 7.6.3

Carbon Footprint: from 7.59kg CO₂e



Verified carbon footprint for Emeco Small stool in handbrushed aluminum using the 2030 Calculator.

Circular Content / Materials:



End of Life / Recyclability:

Emeco stools come with a 150-year warranty and a long life expectancy. Should the need for recycling arise, aluminum is 100% recyclable and can be recycled endlessly.



Ingredient Disclosure:

Health Product Declaration (HPD) disclosed to 1000 ppm.

Potential LEED and WELL contributions:

Emeco products contribute to a number of LEED Credits:

LEED BD + C (Building Design and Construction) and ID+C (Interior Design and Construction):

- ✓ CREDIT CATEGORY: MATERIALS AND RESOURCES
 - Sourcing of Raw Materials
 - Material Ingredients
 - Furniture and Medical Furnishings (only applies to LEED BD+C: Healthcare)
 - Construction and Demolition Waste Management
- ✓ CREDIT CATEGORY: INDOOR ENVIRONMENTAL QUALITY
 - Low-Emitting Materials

Emeco products contribute to WELL v2 certification for the following features:

- ✓ Concept Materials: Feature X07 Material Transparency (Part 1, 2, 3)
- ✓ Concept Materials: Feature: X07 Material Optimization (Part 1)
- ✓ Concept Innovation: Feature: I06 Carbon Disclosure and Reduction (Part 1)
- ✓ Emeco products may also contribute to WELL Concepts Air, Light and Thermal Comfort.

Downloads & More Information:

[Download Certificates and HPD](#)

[Download LEED & WELL information](#)

[More Carbon Footprint information](#)



EMECO STOOL

By Philippe Starck, 2001

Requires Assembly:

No. Delivered fully assembled.

Shipping Dimensions:

Small stool

1 item per box (WxHxD, weight): 18x18x22, 9lb

2 items per box (WxHxD, weight): 22x20x23, 15lb

Counter stool

1 item per box (WxHxD, weight): 22x20x27, 14lb

2 items per box (WxHxD, weight): 22x20x42, 20lb

Barstool

1 item per box (WxHxD, weight): 22x20x33, 15lb

2 items per box (WxHxD, weight): 22x20x42, 21lb

Packaging materials:

Outer Packaging: Recycled cardboard.

Inner Packaging: Recycled cardboard, recycled plastic and PE foam.

The packaging material is 100% recyclable.

Country of origin:

USA (stated on packaging)

Care & Maintenance:

Longevity is an important part of sustainability. All Emeco furniture is designed and built for a long life. To keep the Emeco stools looking good over time, follow our [care advice](#).

Replacement parts:

Emeco stools wearing parts like glides can be easily replaced to extend the product's lifecycle.

Manufacturing Facility Location:

Hanover, Pennsylvania

Other models, related collections & accessories:



[EMECO STOOL SEAT PAD](#)